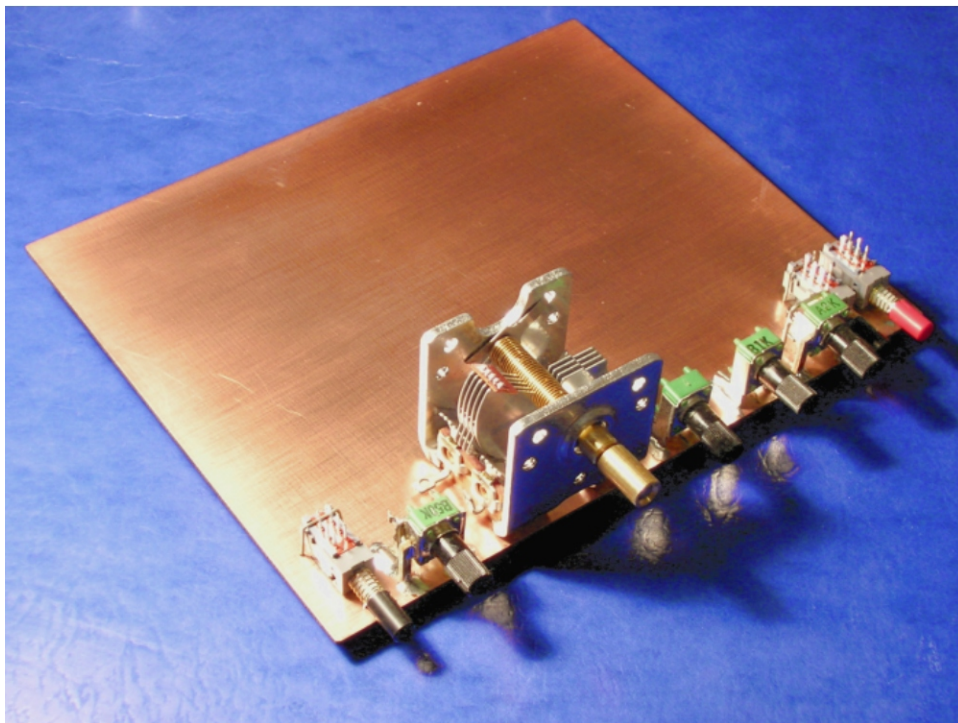
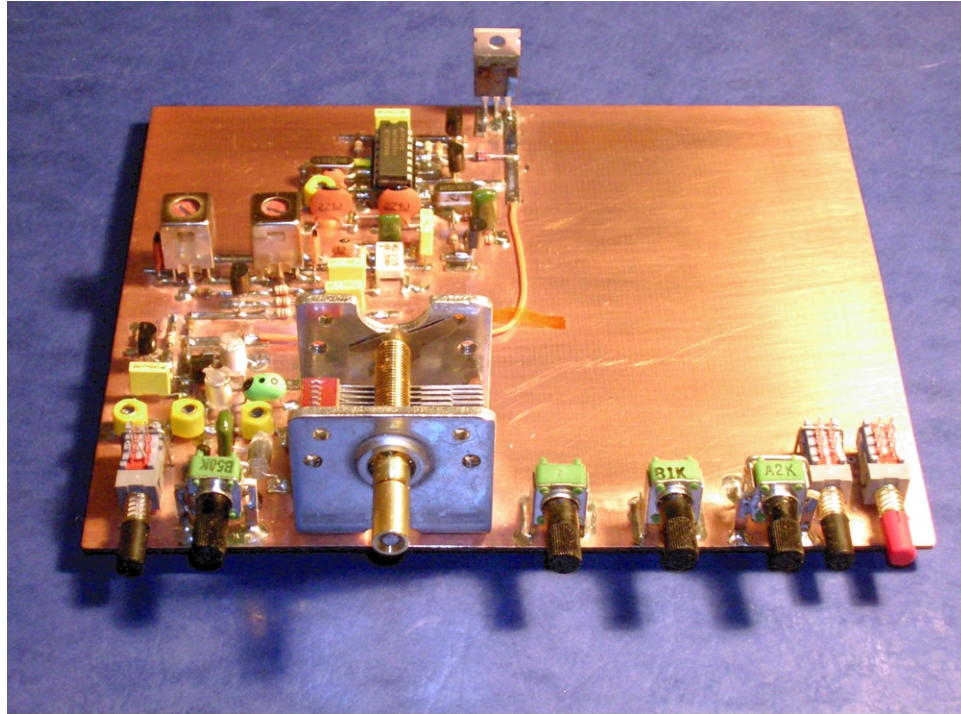


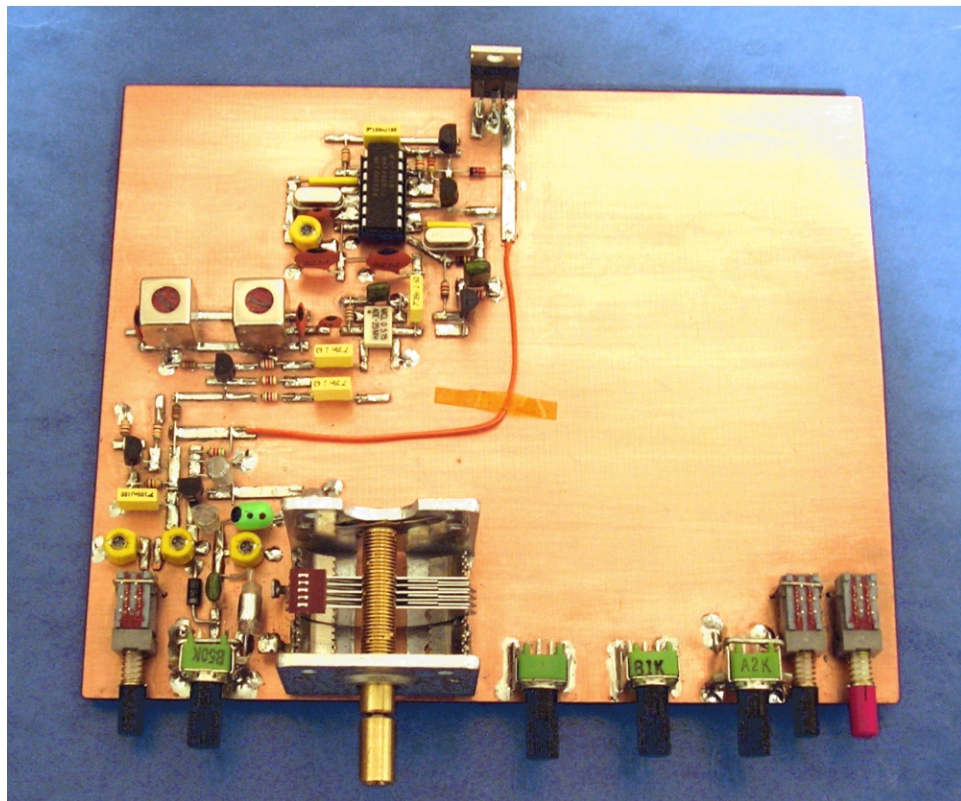
Step 1: Cutting out and finishing the main board, and the front and rear panel pieces. Stock is double sided .062" copper clad.



Step 2: Front panel controls mounted.



Step 3: VFO, BFO, TXO, T/R switching, TX mixer, TX filter and +8v regulator built. Manhattan pads made from .031" double sided copper clad. All circuits ready for testing upon installation of RX mixer for proper load on VFO.



Another view. U5 74HC00 socketted for convenience of prototype testing. An ADE-35MH (level 13 DBM mixer) temporarily used in lieu of ADE-1.