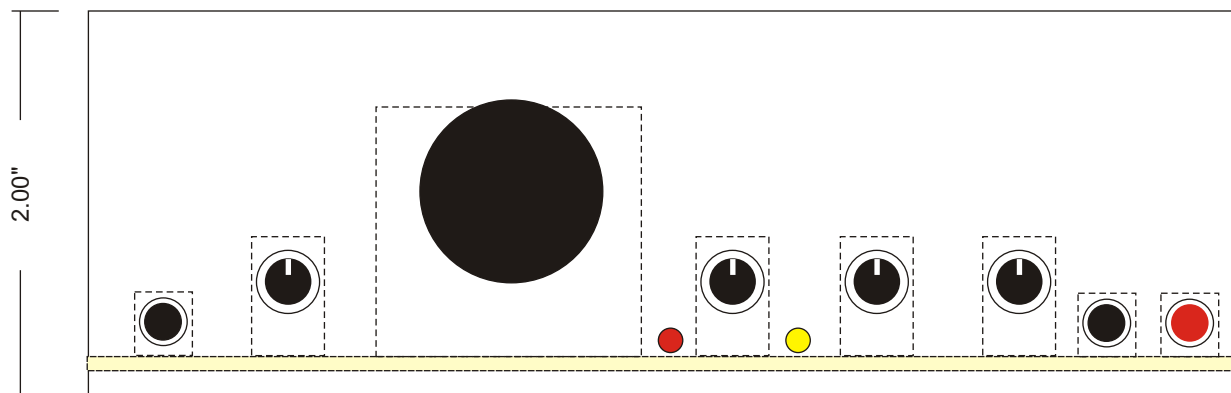


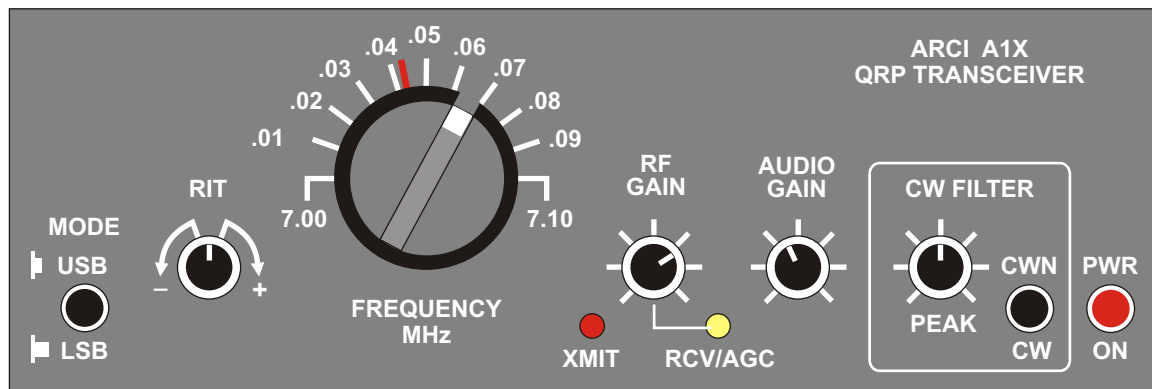
NOTES:

1. LAYOUT SHOWN BASED ON MANHATTAN STYLE CONSTRUCTION TO APPROXIMATE PCB LAYOUT (SEE SHT. 4)
2. BOARD SIZE: 6.0 x 5.0 IN.
3. LAYOUT BASED ON 1/8W RESISTORS. 1/4W RESISTORS MAY REQUIRE A SLIGHTLY LARGER BOARD
4. PROTOTYPE LAYOUT MAY BE EASIER TO USE DISCRETE RESISTORS IN AUDIO FILTER INSTEAD OF THE SIPs
5. SEE SHT. 5 FOR GRAYSCALE VERSION FOR BLACK & WHITE PRINTERS.



COMPONENT LOCATIONS FOR FRONT PANEL

CAN PROVIDE DIMENSIONS IF DESIRED. DRAWN TO SCALE FOR 8.5x11 PAPER.

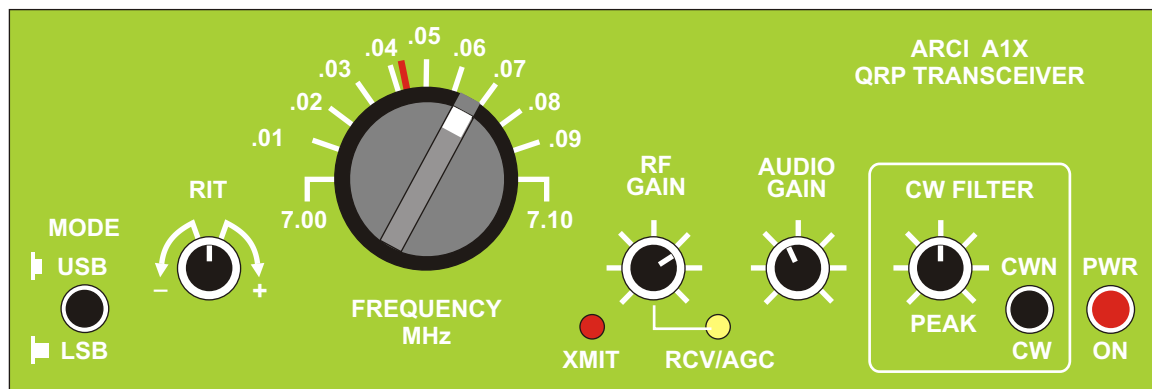


PROPOSED FRONT PANEL

.062 DOUBLE SIDED PCB
BLACK SOLDER MASK
WHITE SCREENED LAYER TO FORM CONTROL LEGENDS

FRONT PANEL MOUNTED TO MAIN PCB VIA VARIABLE CAPACITOR AND SOLDERED ALONG MATING FACES.

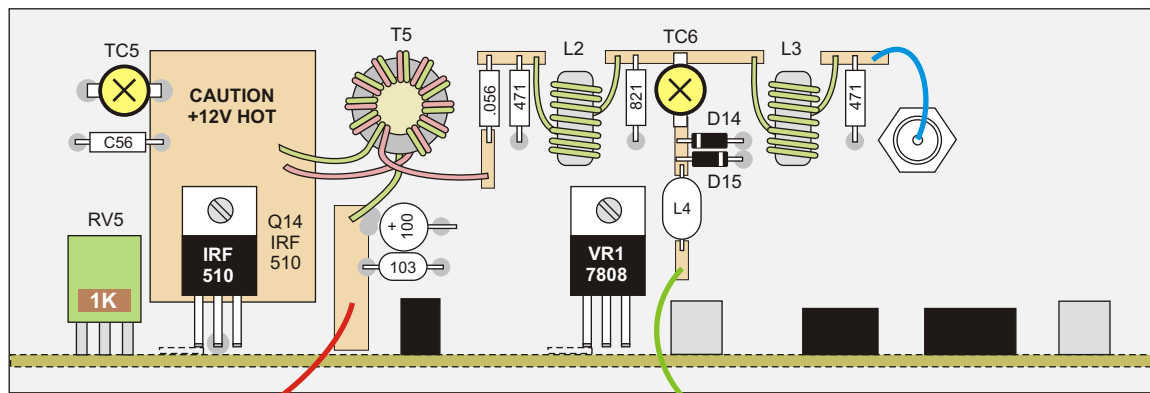
BLACK FINISH GIVES IT THAT "AVIONICS" LOOK.



PROPOSED FRONT PANEL

SAME AS ABOVE EXCEPT GREEN SOLDER MASKING.

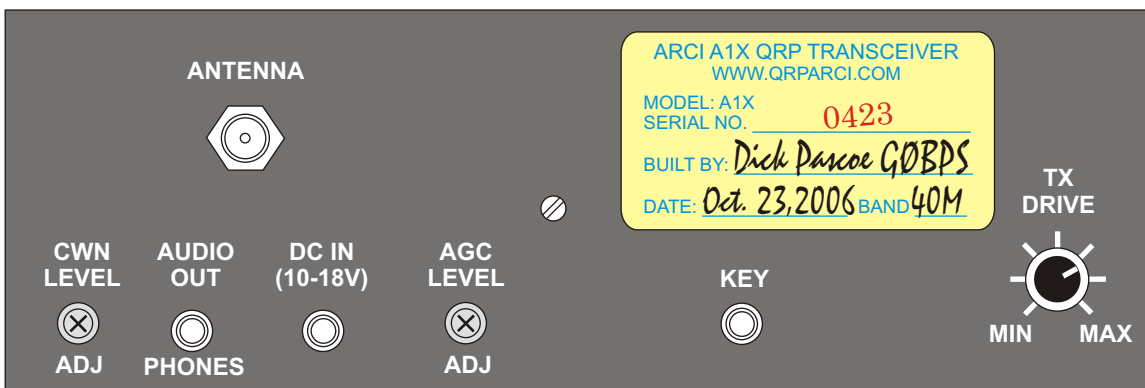
MOST PCB HOUSES WILL DO SOLDER MASK IN ANY COLOR FOR AN ADDITIONAL SETUP FEE IF ANOTHER COLOR IS DESIRED.



+12V TO JP1

RX ANT TO C10/Q4

STICK-BACK LABEL FOR BUILDER TO FILL OUT AND APPLY WITH SEQUENTIAL SERIAL NUMBER. QRPers GOTTA HAVE A NUMBER! PRENUMBERED TO ALSO HELP WITH INVENTORY CONTROL.



INSIDE BACK PANEL

CONTAINS PA AND OUTPUT FILTER COMPONENTS

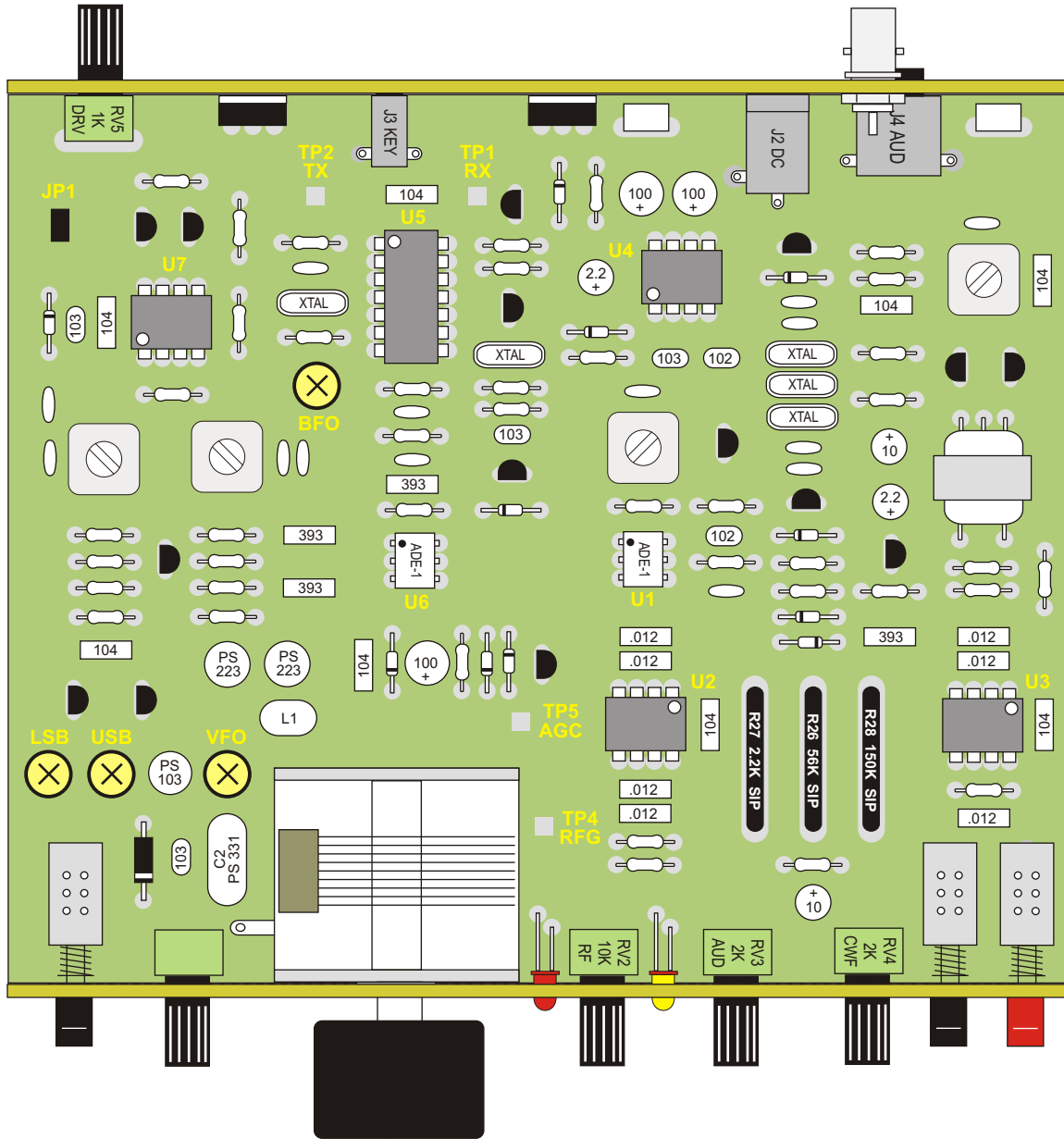
PART OF FRONT/REAR PANEL PCB (BLACK SOLDER MASK)

LAYOUT SHOWN FOR MANHATTAN STYLE – PCB VERSION HZAS FEW TRACES, COMPONENTS MOUNTED SURFACE MOUNT STYLE.

PROPOSED BACK PANEL

.062 DOUBLE SIDED PCB
BLACK SOLDER MASK
WHITE SCREENED LAYER TO FORM CONTROL LEGENDS

BACK PANEL MOUNTED TO MAIN PCB BY SOLDERING ALONG MATING FACES TO MAIN PCB - MAY NEED SIDE PIECES OR BRACKET TO STIFFEN FOR BNC (EVERYTHING ELSE MOUNTED TO MAIN PCB)



PROPOSED PCB LAYOUT (PRELIMINARY)

MAIN PCB: 6.0 x 4.5 IN.
 FRONT PANEL: 2.0 x 6.0 IN.
 REAR PANEL: 2.0 x 6.0 IN.

MOST COMPONENTS IN ROWS TO EASILY SEE REFERENCE DESIGNATION. REFERENCE DESIGNATIONS ON SCHEMATIC WILL BE "RENUMBERED" SO NUMBERING WILL BE IN APPROXIMATE SEQUENCE AS THEY APPEAR ON THE BOARD TO EASE BUILDING. (SO C11 IS NEXT TO C12, NOT C43).

AN ALUMINUM ENCLOSURE CAN BE A \$15-20 OPTION. WILL BE DELIVERING DRAWINGS TO A COUPLE OF LOCAL METAL SHOPS FOR ESTIMATES SHORTLY.

GRAYSCALE
PRINTER FRIENDLY
VERSION
FOR BLACK & WHITE
PRINTERS

